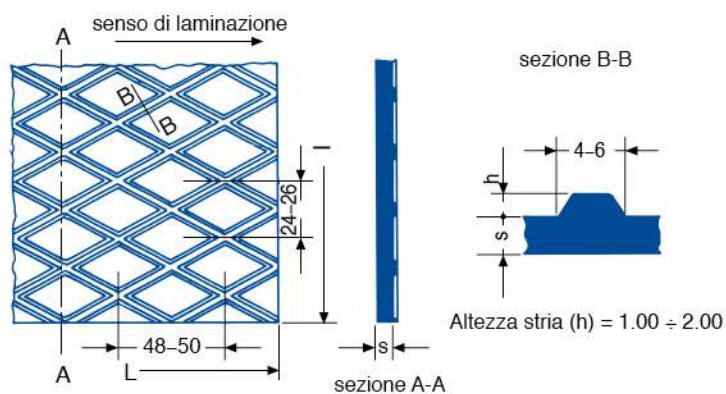


**LAMIERE**
**LAMIERE ZINCATE**

numero calibro	spessore mm	peso kg/m <sup>2</sup>
34	0.20	1.75
33	0.23	1.99
32	0.25	2.14
31	0.27	2.30
30	0.30	2.73
29	0.35	3.13
28	0.40	3.52
27	0.45	3.91
26	0.50	4.30
25	0.55	4.70
24	0.60	5.10
23	0.70	5.90
22	0.80	6.65
20	1.00	8.25
18	1.25	9.90
17	1.50	12.15
14	2.00	16.10
12	2.50	20.05
10	3.00	23.95

**LAMIERE STRIATE**


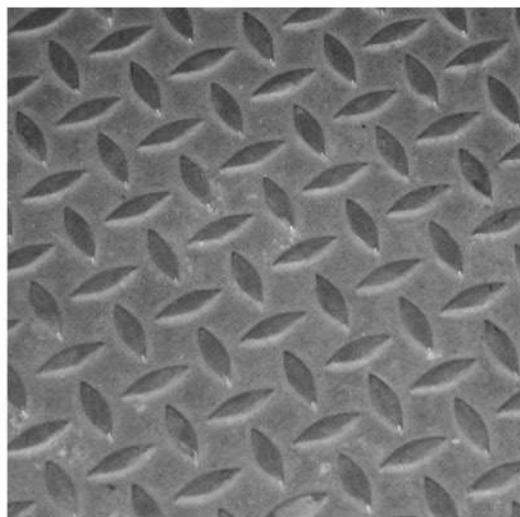
\* non unificato

spessore mm	peso kg/m <sup>2</sup>	dimensioni in mm				
		1000 x 2000	1000 x 3000	1250 x 2500	1500 x 3000	1500 x 6000
peso in kg						
2	20.8	41.6		65	93.6	
* 2.5	22.2	45		69	100	
3	28.6	57.2	85.8	89.4	128.7	257.4
4	36.5	73	109.5	114	164.3	328.5
5	44.3	88.6	132.9	138.5	199.4	398.7
6	52.1	104.2	156.3	163	234.5	468.9
7	60	120	180	187.5	270	540
8	67.8	135.6	203.4	211.9	305.1	610.2
10	83.6	167.2	250.8	261.2	376.2	752.4
12	99.1	198.2	297.3	309.7	446	891.9
* 14	115					

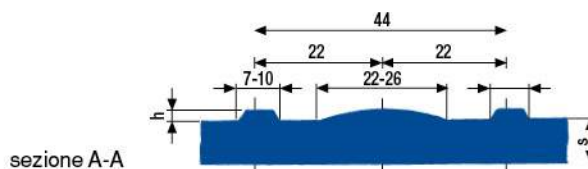
su richiesta le lamiere si forniscono tagliate a misura

**LAMIERE**

**LAMIERE BUGNATE**

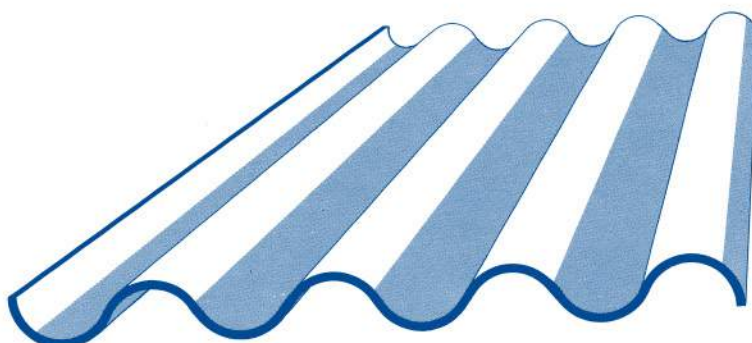


spessore mm	peso kg/m <sup>2</sup>	dimensioni in mm		
		2000 x 1000	2500 x 1250	3000 x 1500
		peso in kg		
2	18.20	36.4	54.8	81.9
3	26.05	52.1	81.1	117
4	33.95	67.9	106	153
5	41.75	83.5	130.1	187.6
6	52.10			
8	67.90			
10	81.00			
12	96.70			



Spessore nominale nastro (S)	Altezza bugna (h)
S ≤ 3 mm	h = 0.80 ÷ 2.00
S > 3 mm	h = 1.00 ÷ 2.00

**LAMIERE ZINCATE ONDULATE**



spessore mm	0.25	0.30	0.40	0.50	0.60	0.80	1.00
peso kg/m <sup>2</sup>	2.14	2.73	3.52	4.30	5.10	6.65	8.25